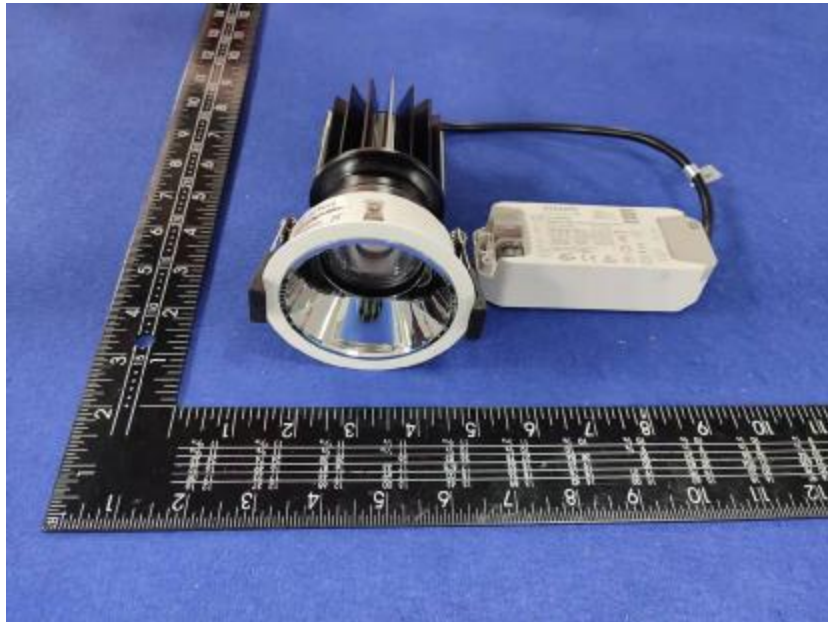


Luminaire Photograph



Light Output Ratio:	80.4%	
Luminaire Power:	20.72 W	
SHR Nominal:	0.00	Calculated using the TM5
SHR Maximum:	1.00	fine grid method.

C Range: 0 - 360DEG
C Interval: 30.0DEG
Test Speed: HIGH
Temperature: 25.3DEG
Operators: Zoe
Test Date: 2022-2-26

g Range: 0 - 180DEG
g Interval: 1.0DEG
Test System: EVERFINE GO-SPEX500_V1 SYSTEM V2.00.416
Humidity: 65.0%
Test Distance: 3.160m [K=1.0000]
Remarks: LAMP: CMU1013-0000-000N0U0A30G Ra:90
LENS: PM-1083 15R
DRIVER: 9290 028 089 500mA
30minutes warm-up

LUMINOUS INTENSITY DISTRIBUTION DIAGRAM

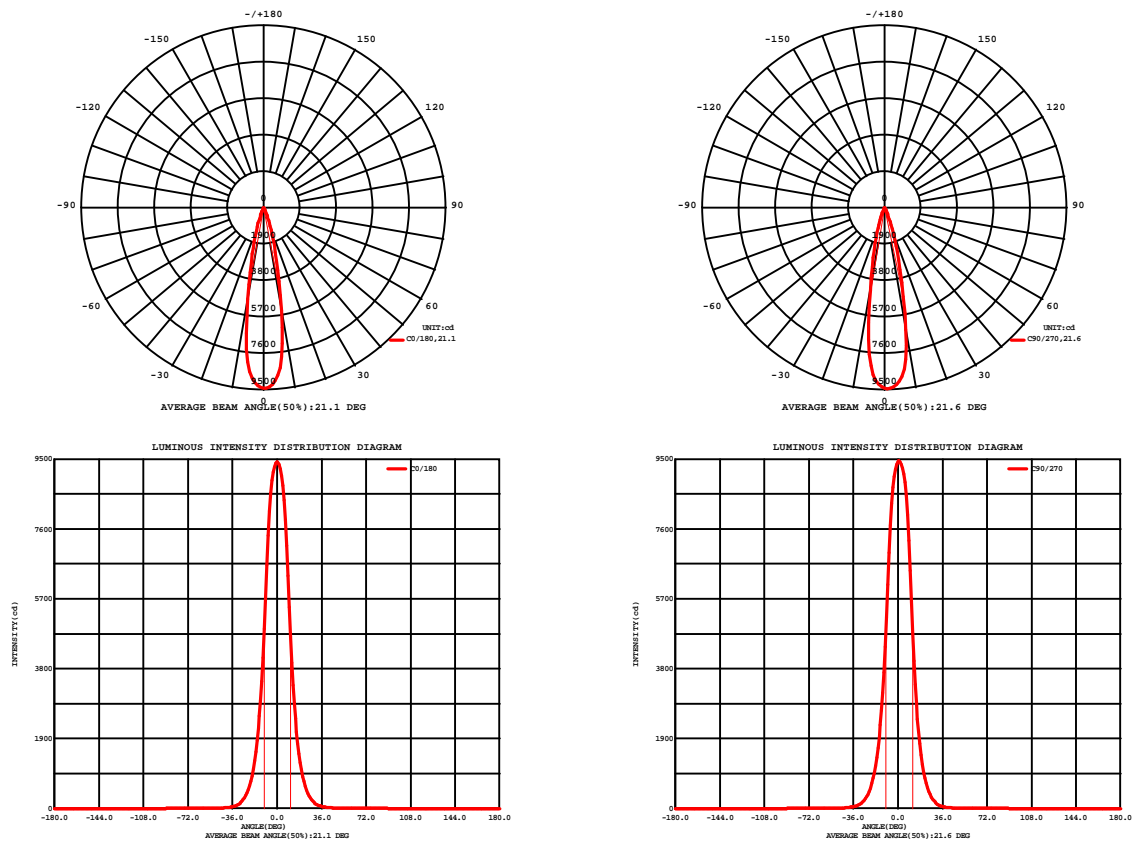


Fig. C0/C180

Fig. C90/C270

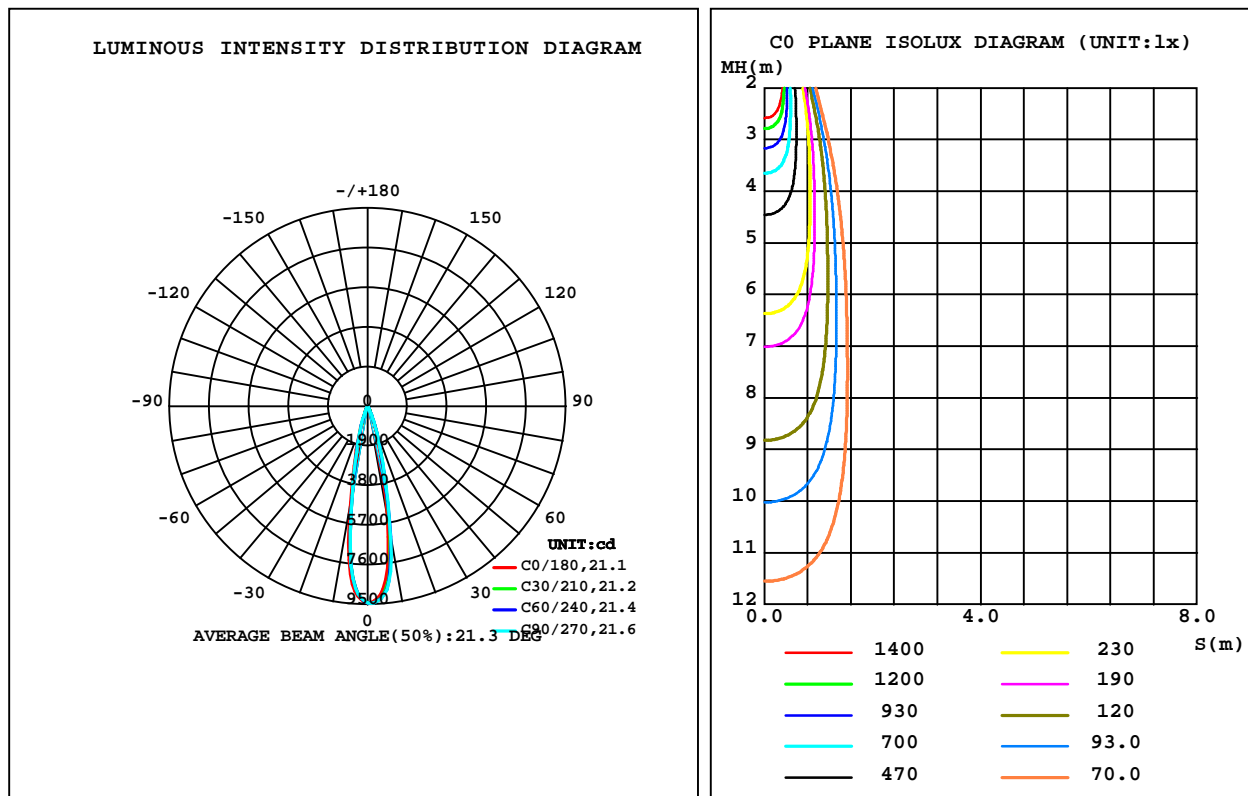
C Range: 0 - 360DEG
C Interval: 30.0DEG
Test Speed: HIGH
Temperature: 25.3DEG
Operators: Zoe
Test Date: 2022-2-26

Range: 0 - 180DEG
Interval: 1.0DEG
Test System: EVERFINE GO-SPEX500_V1 SYSTEM V2.00.416
Humidity: 65.0%
Test Distance: 3.160m [K=1.0000]
Remarks: LAMP: CMU1013-0000-000N0U0A30G Ra: 90
LENS: PM-1083 15R
DRIVER: 9290 028 089 500mA
30minutes warm-up

LUMINAIRE PHOTOMETRIC TEST REPORT

Test:U:220.31V I:0.0971A P:20.721W PF:0.9661 Freq:49.99Hz Lamp Flux:2048.03x1 lm		
NAME: 2118.532-ACOT-37	TYPE:	WEIGHT:
SPEC.:3000K	DIM.:	SERIAL No.:2202260109
MFR.: RISE	SUR.:0.003316625m2	Shielding Angle:

DATA OF LAMP		PHOTOMETRIC DATA Eff: 79.50 lm/W			
MODEL	CREE	I _{max} (cd)	9457	S/MH(C0/180)	0.35
NOMINAL POWER(W)	20	LOR(%)	80.4	S/MH(C90/270)	0.33
RATED VOLTAGE(V)	220	TOTAL FLUX(lm)	1647.3	h UP,DN(C0-180)	0.0,44.4
NOMINAL FLUX(lm)	2048.03	CIE CLASS	DIRECT	h UP,DN(C180-360)	0.0,36.0
LAMPS INSIDE	1	h up(%)	0.0	CIBSE SHR NOM	0.00
TEST VOLTAGE(V)	220	h down(%)	80.4	CIBSE SHR MAX	1.00



C Range: 0 - 360DEG
C Interval: 30.0DEG
Test Speed: HIGH
Temperature:25.3DEG
Operators:Zoe
Test Date:2022-2-26

g Range: 0 - 180DEG
Interval: 1.0DEG
Test System:EVERFINE GO-SPEX500_V1 SYSTEM V2.00.416
Humidity:65.0%
Test Distance:3.160m [K=1.0000]
Remarks: LAMP:CMU1013-0000-000N0U0A30G Ra:90
LENS:PM-1083 15R
DRIVER:9290 028 089 500mA
30minutes warm-up

ZONAL FLUX DIAGRAM

ZONAL FLUX DIAGRAM:

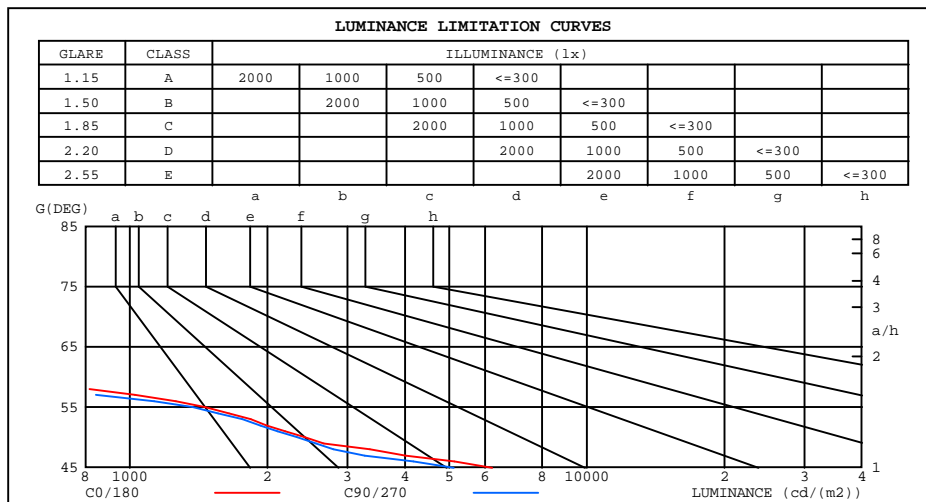
g	C0	C45	C90	C135	C180	C225	C270	C315	g	F zone	F total	%lum,lamp
10	5480	6286	6467	5895	4872	4335	4398	4879	0- 10	721.3	721.3	43.8,35.2
20	1047	1188	1199	1038	883.0	781.8	826.3	886.1	10- 20	677.5	1399	84.9,68.3
30	163.6	180.2	174.6	150.9	132.8	121.1	129.9	138.2	20- 30	193.3	1592	96.7,77.7
40	32.27	31.80	29.20	25.49	24.00	23.95	25.95	28.48	30- 40	42.71	1635	99.2,79.8
50	5.197	5.374	4.941	4.415	3.883	4.189	4.185	4.554	40- 50	9.856	1645	99.8,80.3
60	0.7780	0.8405	0.7071	0.5865	0.6398	0.7905	0.7430	0.7021	50- 60	2.115	1647	100,80.4
70	0.0506	0.0337	0.0350	0.0311	0.0515	0.0371	0.0417	0.0311	60- 70	0.3264	1647	100,80.4
80	0.0616	0.0306	0.0363	0.0283	0.1977	0.0387	0.0480	0.0285	70- 80	0.0441	1647	100,80.4
90	0	0	0	0	0	0	0	0	80- 90	0.0428	1647	100,80.4
100	0	0	0	0	0	0	0	0	90-100	0	1647	100,80.4
110	0	0	0	0	0	0	0	0	100-110	0	1647	100,80.4
120	0	0	0	0	0	0	0	0	110-120	0	1647	100,80.4
130	0	0	0	0	0	0	0	0	120-130	0	1647	100,80.4
140	0	0	0	0	0	0	0	0	130-140	0	1647	100,80.4
150	0	0	0	0	0	0	0	0	140-150	0	1647	100,80.4
160	0	0	0	0	0	0	0	0	150-160	0	1647	100,80.4
170	0	0	0	0	0	0	0	0	160-170	0	1647	100,80.4
180	0	0	0	0	0	0	0	0	170-180	0	1647	100,80.4
DEG	LUMINOUS INTENSITY:cd									UNIT:lm		

C Range: 0 - 360DEG
C Interval: 30.0DEG
Test Speed: HIGH
Temperature:25.3DEG
Operators:Zoe
Test Date:2022-2-26

g Range: 0 - 180DEG
Interval: 1.0DEG
Test System:EVERFINE GO-SPEX500_V1 SYSTEM V2.00.416
Humidity:65.0%
Test Distance:3.160m [K=1.0000]
Remarks: LAMP:CMU1013-0000-000N0U0A30G Ra:90
LENS:PM-1083 15R
DRIVER:9290 028 089 500mA
30minutes warm-up

LUMINANCE LIMITATION CURVES

Test:U:220.31V I:0.0971A P:20.721W PF:0.9661 Freq:49.99Hz Lamp Flux:2048.03x1 lm		
NAME: 2118.532-ACOT-37	TYPE:	WEIGHT:
SPEC.:3000K	DIM.:	SERIAL No.:2202260109
MFR.: RISE	SUR.:0.003316625m2	Shielding Angle:



LUMINANCE cd/(m2)		
G(180)	C0/180	C90/270
85	198	142
80	106	63
75	61	37
70	44	31
65	384	193
60	465	428
55	1458	1372
50	2415	2324
45	6217	5120

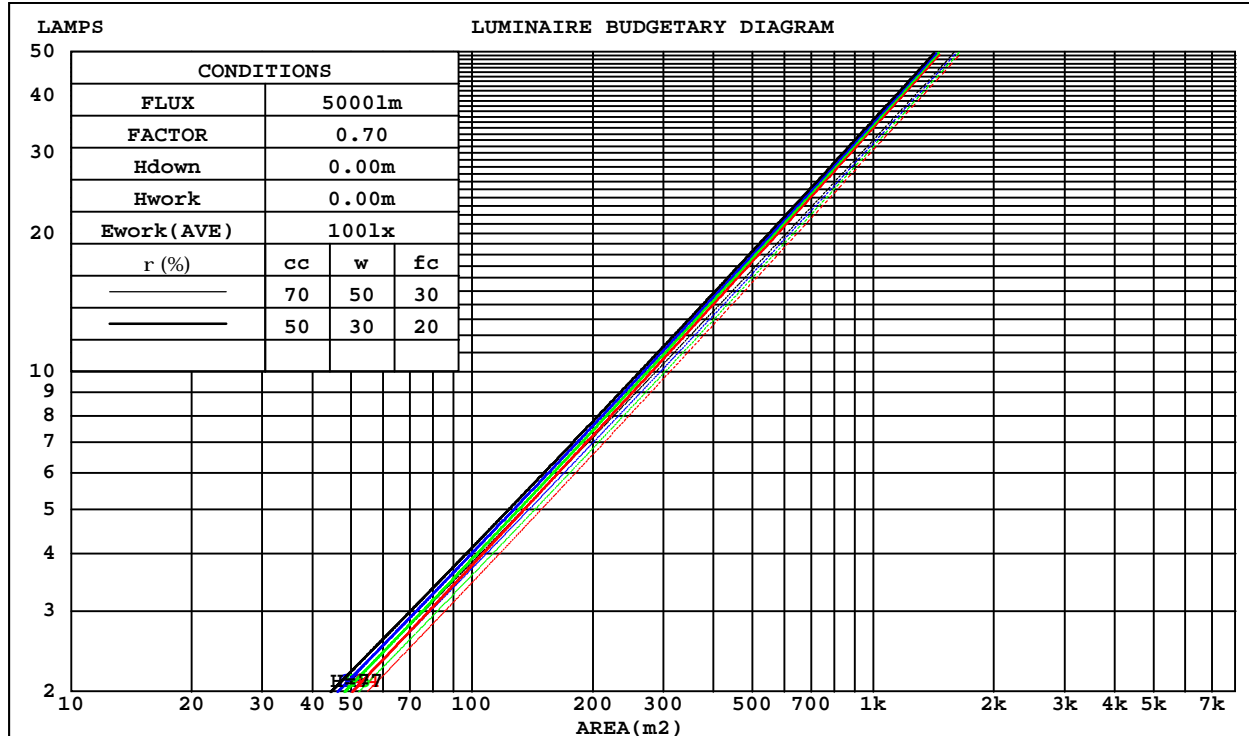
C Range: 0 - 360DEG
C Interval: 30.0DEG
Test Speed: HIGH
Temperature:25.3DEG
Operators:Zoe
Test Date:2022-2-26

G Range: 0 - 180DEG
G Interval: 1.0DEG
Test System:EVERFINE GO-SPEX500_V1 SYSTEM V2.00.416
Humidity:65.0%
Test Distance:3.160m [K=1.0000]
Remarks: LAMP:CMU1013-0000-000N0U0A30G Ra:90
LENS:PM-1083 15R
DRIVER:9290 028 089 500mA
30minutes warm-up

CU AND LUMINAIRE BUDGETARY ESTIMATE DIAGRAM

Test:U:220.31V I:0.0971A P:20.721W PF:0.9661 Freq:49.99Hz Lamp Flux:2048.03x1 lm		
NAME: 2118.532-ACOT-37	TYPE:	WEIGHT:
SPEC.:3000K	DIM.:	SERIAL No.:2202260109
MFR.: RISE	SUR.:0.003316625m2	Shielding Angle:

rcc	80%			70%			50%			30%			10%			0
r _w	50%	30%	10%	50%	30%	10%	50%	30%	10%	50%	30%	10%	50%	30%	10%	0
r _{fc}	20%			20%			20%			20%			20%			0
RCR	RCR:Room Cavity Ratio															



C Range: 0 - 360DEG
C Interval: 30.0DEG
Test Speed: HIGH
Temperature:25.3DEG
Operators:Zoe
Test Date:2022-2-26

g Range: 0 - 180DEG
Interval: 1.0DEG
Test System:EVERFINE GO-SPEX500_V1 SYSTEM V2.00.416
Humidity:65.0%
Test Distance:3.160m [K=1.0000]
Remarks: LAMP:CMU1013-0000-000N0U0A30G Ra:90
LENS:PM-1083 15R
DRIVER:9290 028 089 500mA
30minutes warm-up

WEC AND CCEC

Test:U:220.31V I:0.0971A P:20.721W PF:0.9661 Freq:49.99Hz Lamp Flux:2048.03x1 lm		
NAME: 2118.532-ACOT-37	TYPE:	WEIGHT:
SPEC.:3000K	DIM.:	SERIAL No.:2202260109
MFR.: RISE	SUR.:0.003316625m2	Shielding Angle:

rcc	80%			70%			50%			30%			10%			0
rw	50%	30%	10%	50%	30%	10%	50%	30%	10%	50%	30%	10%	50%	30%	10%	0
rfc	20%			20%			20%			20%			20%			0
RCR	RCR:Room Cavity Ratio Wall Exitance Coefficients(WEC)															
0.0																
1.0	.104	.059	.019	.098	.056	.018	.088	.051	.016	.079	.046	.015	.071	.041	.013	
2.0	.095	.052	.016	.091	.050	.015	.083	.046	.014	.075	.042	.013	.069	.039	.012	
3.0	.089	.047	.014	.085	.045	.014	.078	.042	.013	.072	.039	.012	.066	.037	.011	
4.0	.083	.043	.013	.080	.042	.012	.074	.039	.012	.069	.037	.011	.064	.035	.011	
5.0	.078	.040	.011	.075	.039	.011	.070	.037	.011	.066	.035	.010	.062	.033	.010	
6.0	.073	.037	.011	.071	.036	.010	.067	.034	.010	.063	.033	.010	.059	.031	.009	
7.0	.069	.034	.010	.067	.034	.010	.064	.032	.009	.061	.031	.009	.057	.030	.009	
8.0	.066	.032	.009	.064	.032	.009	.061	.031	.009	.058	.030	.009	.056	.029	.008	
9.0	.063	.030	.008	.061	.030	.008	.059	.029	.008	.056	.028	.008	.054	.027	.008	
10.0	.060	.029	.008	.059	.028	.008	.057	.028	.008	.054	.027	.008	.052	.026	.008	

rcc	80%			70%			50%			30%			10%			0
rw	50%	30%	10%	50%	30%	10%	50%	30%	10%	50%	30%	10%	50%	30%	10%	0
rfc	20%			20%			20%			20%			20%			0
RCR	RCR:Room Cavity Ratio Ceiling Cavity Exitance Coefficients(CCEC)															
0.0	.153	.153	.153	.131	.131	.131	.089	.089	.089	.051	.051	.051	.016	.016	.016	
1.0	.135	.127	.120	.115	.109	.103	.079	.075	.071	.045	.043	.041	.015	.014	.013	
2.0	.120	.107	.096	.103	.092	.083	.070	.064	.058	.041	.037	.034	.013	.012	.011	
3.0	.108	.091	.078	.092	.079	.068	.063	.055	.047	.037	.032	.028	.012	.010	.009	
4.0	.097	.079	.064	.083	.068	.056	.057	.047	.039	.033	.028	.023	.011	.009	.008	
5.0	.088	.069	.054	.076	.059	.047	.052	.041	.033	.030	.024	.020	.010	.008	.006	
6.0	.081	.060	.046	.070	.052	.040	.048	.037	.028	.028	.022	.017	.009	.007	.006	
7.0	.075	.054	.039	.064	.047	.034	.044	.033	.024	.026	.019	.014	.008	.006	.005	
8.0	.069	.048	.034	.060	.042	.029	.041	.029	.021	.024	.017	.012	.008	.006	.004	
9.0	.065	.044	.029	.056	.038	.026	.039	.027	.018	.022	.016	.011	.007	.005	.004	
10.0	.061	.040	.026	.052	.034	.022	.036	.024	.016	.021	.014	.010	.007	.005	.003	

C Range: 0 - 360DEG
C Interval: 30.0DEG
Test Speed: HIGH
Temperature:25.3DEG
Operators:Zoe
Test Date:2022-2-26

g Range: 0 - 180DEG
Interval: 1.0DEG
Test System:EVERFINE GO-SPEX500_V1 SYSTEM V2.00.416
Humidity:65.0%
Test Distance:3.160m [K=1.0000]
Remarks: LAMP:CMU1013-0000-000N0U0A30G Ra:90
LENS:PM-1083 15R
DRIVER:9290 028 089 500mA
30minutes warm-up

UGR(Unified Glare Rating) Table

Test:U:220.31V I:0.0971A P:20.721W PF:0.9661 Freq:49.99Hz Lamp Flux:2048.03x1 lm										
NAME: 2118.532-ACOT-37					TYPE:			WEIGHT:		
SPEC.:3000K					DIM.:			SERIAL No.:2202260109		
MFR.: RISE					SUR.:0.003316625m2			Shielding Angle:		
ceiling/cavity	0.7	0.7	0.5	0.5	0.3	0.7	0.7	0.5	0.5	0.3
walls	0.5	0.3	0.5	0.3	0.3	0.5	0.3	0.5	0.3	0.3
working plane	0.2	0.2	0.2	0.2	0.2	0.2	0.2	0.2	0.2	0.2
Room dimensions	Viewed crosswise					Viewed endwise				
x = 2H y = 2H	8.4	9.0	8.6	9.1	9.3	8.2	8.8	8.4	8.9	9.0
3H	8.2	8.8	8.5	9.0	9.2	8.0	8.6	8.2	8.8	8.9
4H	8.2	8.7	8.4	8.9	9.1	7.9	8.5	8.2	8.7	8.9
6H	8.1	8.6	8.4	8.8	9.0	7.9	8.4	8.1	8.6	8.8
8H	8.0	8.5	8.3	8.8	9.0	7.8	8.3	8.1	8.5	8.8
12H	8.0	8.5	8.3	8.7	9.0	7.8	8.2	8.1	8.5	8.8
4H 2H	8.2	8.7	8.4	8.9	9.1	7.9	8.5	8.2	8.7	8.9
3H	8.0	8.5	8.3	8.7	9.0	7.8	8.2	8.1	8.5	8.8
4H	7.9	8.3	8.2	8.6	8.9	7.7	8.1	8.0	8.4	8.7
6H	7.8	8.2	8.2	8.5	8.9	7.6	8.0	7.9	8.3	8.6
8H	7.8	8.1	8.1	8.5	8.8	7.5	7.9	7.9	8.2	8.6
12H	7.7	8.0	8.1	8.4	8.8	7.5	7.8	7.9	8.2	8.5
8H 4H	7.8	8.1	8.1	8.5	8.8	7.5	7.9	7.9	8.2	8.6
6H	7.6	7.9	8.1	8.3	8.7	7.4	7.7	7.8	8.1	8.5
8H	7.6	7.8	8.0	8.3	8.7	7.3	7.6	7.8	8.0	8.5
12H	7.5	7.7	8.0	8.2	8.6	7.3	7.5	7.7	7.9	8.4
12H 4H	7.7	8.0	8.1	8.4	8.8	7.5	7.8	7.9	8.2	8.5
6H	7.6	7.8	8.0	8.3	8.7	7.3	7.6	7.8	8.0	8.5
8H	7.5	7.7	8.0	8.2	8.6	7.3	7.5	7.7	7.9	8.4
Variations with the observer position at spacings:										
S = 1.0H	+ 3.3 / -12.3					+ 3.4 / -13.0				
1.5H	+ 5.4 / - 7.9					+ 5.6 / - 8.5				
2.0H	+ 6.7 / - 9.8					+ 6.3 / - 9.3				

CIE Pub.117, 2048 lm Total Lamp Luminous Flux Corrected ($8\log(F/F_0) = 2.5$)
Area: 0.00331663 m2

C Range: 0 - 360DEG
C Interval: 30.0DEG
Test Speed: HIGH
Temperature:25.3DEG
Operators:Zoe
Test Date:2022-2-26

g Range: 0 - 180DEG
g Interval: 1.0DEG
Test System:EVERFINE GO-SPEX500_V1 SYSTEM V2.00.416
Humidity:65.0%
Test Distance:3.160m [K=1.0000]
Remarks: LAMP:CMU1013-0000-000N0U0A30G Ra:90
LENS:PM-1083 15R
DRIVER:9290 028 089 500mA
30minutes warm-up

UTILIZATION FACTORS TABLE

Test:U:220.31V I:0.0971A P:20.721W PF:0.9661 Freq:49.99Hz Lamp Flux:2048.03x1 lm		
NAME: 2118.532-ACOT-37	TYPE:	WEIGHT:
SPEC.:3000K	DIM.:	SERIAL No.:2202260109
MFR.: RISE	SUR.:0.003316625m2	Shielding Angle:

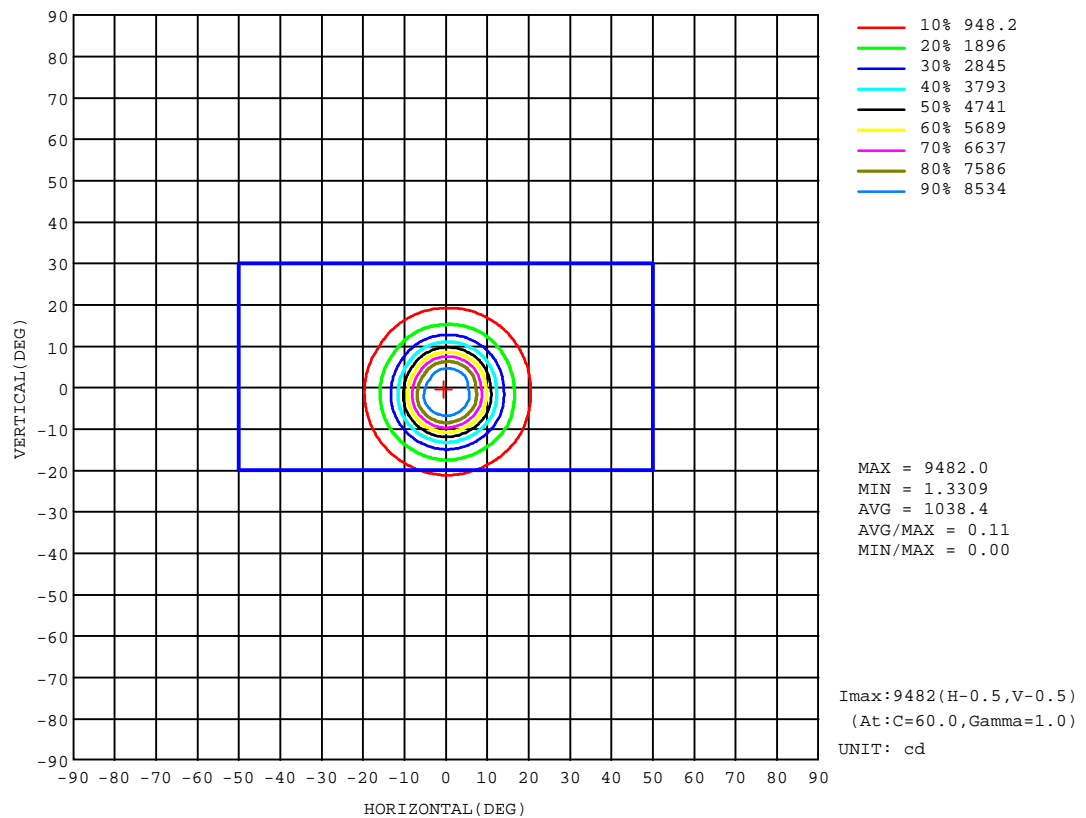
REFLECTANCE										
Ceiling	0.8	0.8	0.8	0.7	0.7	0.7	0.5	0.5	0.5	0
Walls	0.7	0.5	0.3	0.7	0.5	0.3	0.7	0.5	0.3	0
Working plane	0.2	0.2	0.2	0.2	0.2	0.2	0.2	0.2	0.2	0
ROOM INDEX	UTILIZATION FACTORS(PERCENT) $k(RI) \times RCR = 5$									
k = 0.60	73	69	66	73	69	66	72	68	66	63
0.80	79	75	72	78	74	72	77	74	72	69
1.00	82	78	75	81	78	75	80	77	75	72
1.25	85	81	79	84	81	78	82	80	78	74
1.50	87	83	81	86	83	81	84	82	80	76
2.00	88	85	83	87	85	82	85	83	81	77
2.50	90	87	85	88	86	84	86	84	82	78
3.00	91	88	86	89	87	85	87	85	84	79
4.00	92	90	89	91	89	87	88	86	85	80
5.00	93	91	90	91	90	89	88	87	86	80
ROOM INDEX	UF(total)									Direct
According to DIN EN 13032-2 2004			Suspended					SHRNOM = 1.25		

C Range: 0 - 360DEG
C Interval: 30.0DEG
Test Speed: HIGH
Temperature:25.3DEG
Operators:Zoe
Test Date:2022-2-26

g Range: 0 - 180DEG
g Interval: 1.0DEG
Test System:EVERFINE GO-SPEX500_V1 SYSTEM V2.00.416
Humidity:65.0%
Test Distance:3.160m [K=1.0000]
Remarks: LAMP:CMU1013-0000-000N0U0A30G Ra:90
LENS:PM-1083 15R
DRIVER:9290 028 089 500mA
30minutes warm-up

ISOCANDELA DIAGRAM

Test:U:220.31V I:0.0971A P:20.721W PF:0.9661 Freq:49.99Hz Lamp Flux:2048.03x1 lm		
NAME: 2118.532-ACOT-37	TYPE:	WEIGHT:
SPEC.:3000K	DIM.:	SERIAL No.:2202260109
MFR.: RISE	SUR.:0.003316625m2	Shielding Angle:

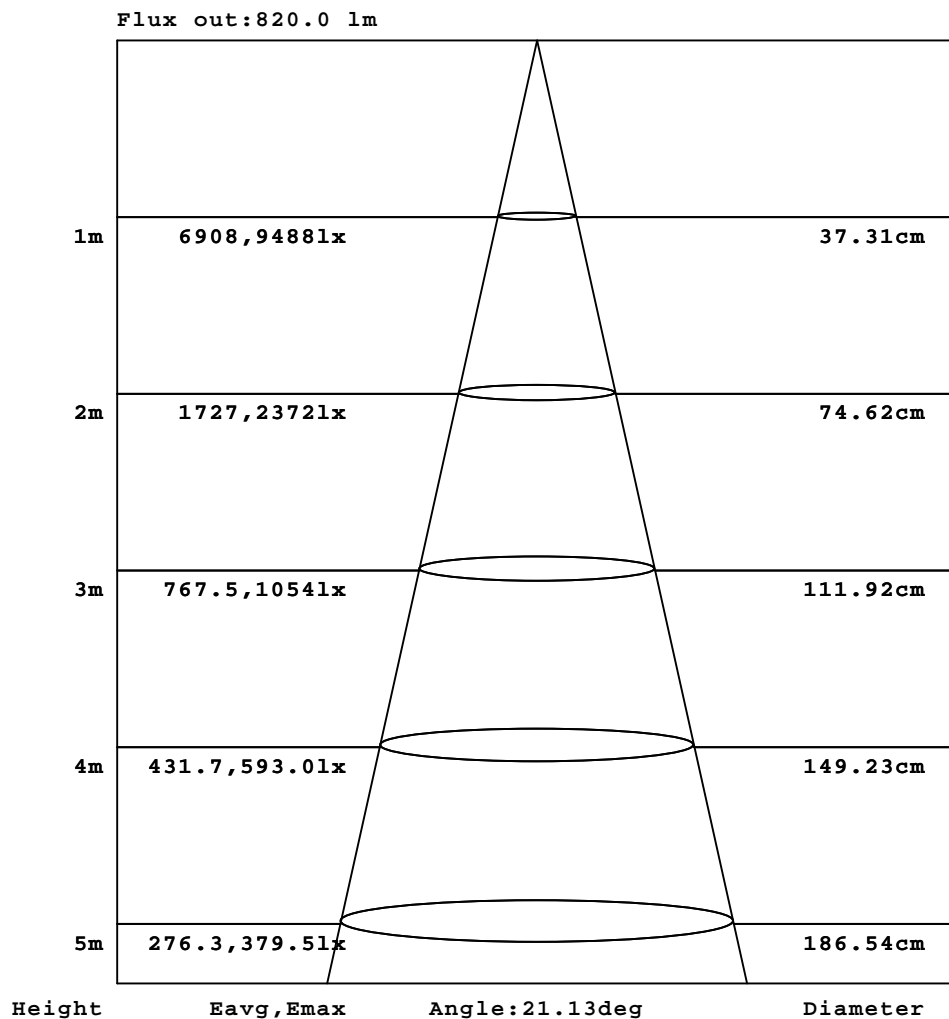


C Range: 0 - 360DEG
C Interval: 30.0DEG
Test Speed: HIGH
Temperature:25.3DEG
Operators:Zoe
Test Date:2022-2-26

g Range: 0 - 180DEG
Interval: 1.0DEG
Test System:EVERFINE GO-SPEX500_V1 SYSTEM V2.00.416
Humidity:65.0%
Test Distance:3.160m [K=1.0000]
Remarks: LAMP:CMU1013-0000-000N0U0A30G Ra:90
LENS:PM-1083 15R
DRIVER:9290 028 089 500mA
30minutes warm-up

AAI Figure

Test:U:220.31V I:0.0971A P:20.721W PF:0.9661 Freq:49.99Hz Lamp Flux:2048.03x1 lm		
NAME: 2118.532-ACOT-37	TYPE:	WEIGHT:
SPEC.:3000K	DIM.:	SERIAL No.:2202260109
MFR.: RISE	SUR.:0.003316625m2	Shielding Angle:



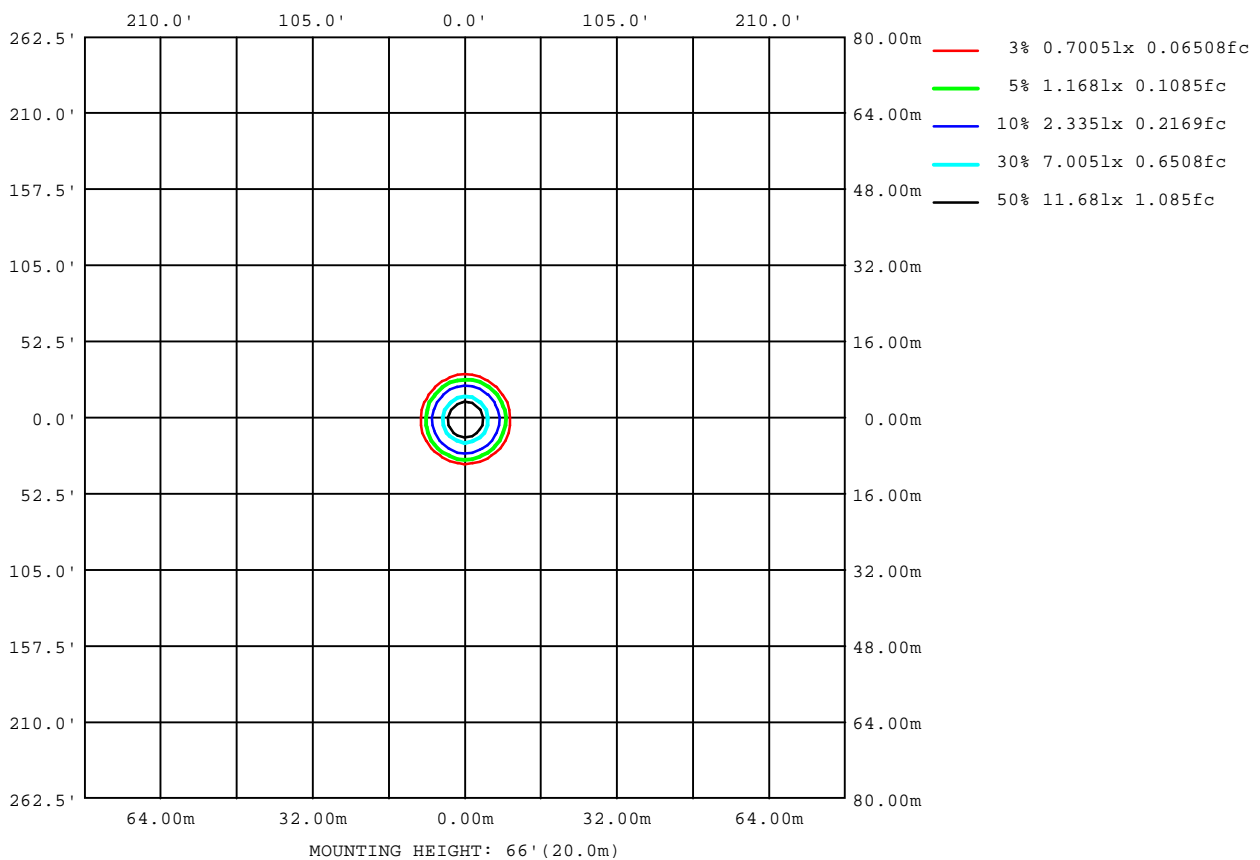
Note:The Curves indicate the illuminated area and the average illumination when the luminaire is at different distance.

C Range: 0 - 360DEG
C Interval: 30.0DEG
Test Speed: HIGH
Temperature:25.3DEG
Operators:Zoe
Test Date:2022-2-26

g Range: 0 - 180DEG
Interval: 1.0DEG
Test System:EVERFINE GO-SPEX500_V1 SYSTEM V2.00.416
Humidity:65.0%
Test Distance:3.160m [K=1.0000]
Remarks: LAMP:CMU1013-0000-000N0U0A30G Ra:90
LENS:PM-1083 15R
DRIVER:9290 028 089 500mA
30minutes warm-up

ISOLUX DIAGRAM

Test:U:220.31V I:0.0971A P:20.721W PF:0.9661 Freq:49.99Hz Lamp Flux:2048.03x1 lm		
NAME: 2118.532-ACOT-37	TYPE:	WEIGHT:
SPEC.:3000K	DIM.:	SERIAL No.:2202260109
MFR.: RISE	SUR.:0.003316625m2	Shielding Angle:



C Range: 0 - 360DEG
C Interval: 30.0DEG
Test Speed: HIGH
Temperature:25.3DEG
Operators:Zoe
Test Date:2022-2-26

g Range: 0 - 180DEG
g Interval: 1.0DEG
Test System:EVERFINE GO-SPEX500_V1 SYSTEM V2.00.416
Humidity:65.0%
Test Distance:3.160m [K=1.0000]
Remarks: LAMP:CMU1013-0000-000N0U0A30G Ra:90
LENS:PM-1083 15R
DRIVER:9290 028 089 500mA
30minutes warm-up

LED Avg.L Report

Test:U:220.31V I:0.0971A P:20.721W PF:0.9661 Freq:49.99Hz Lamp Flux:2048.03x1 lm		
NAME: 2118.532-ACOT-37	TYPE:	WEIGHT:
SPEC.:3000K	DIM.:	SERIAL No.:2202260109
MFR.: RISE	SUR.:0.003316625m2	Shielding Angle:

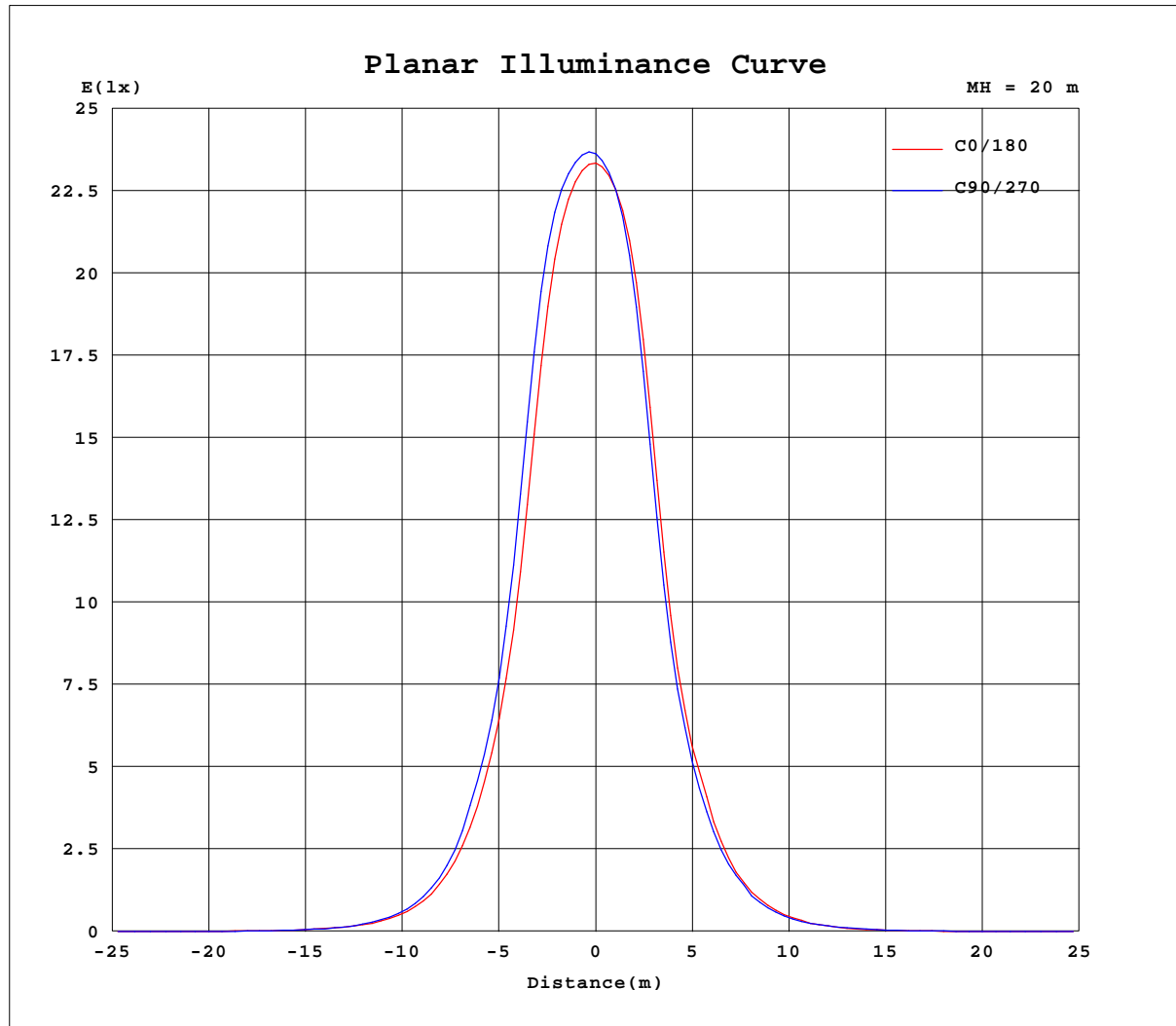
AvgL	cd/m2
L_0~180(65)av	213
L_0~180(75)av	88
L_0~180(85)av	197
L_90~270(65)av	236
L_90~270(75)av	42
L_90~270(85)av	160
L_45(65)av	209
L_45(75)av	34
L_45(85)av	83

Standard: GB/T 29293-2012

C Range: 0 - 360DEG
C Interval: 30.0DEG
Test Speed: HIGH
Temperature:25.3DEG
Operators:Zoe
Test Date:2022-2-26

g Range: 0 - 180DEG
Interval: 1.0DEG
Test System:EVERFINE GO-SPEX500_V1 SYSTEM V2.00.416
Humidity:65.0%
Test Distance:3.160m [K=1.0000]
Remarks: LAMP:CMU1013-0000-000N0U0A30G Ra:90
LENS:PM-1083 15R
DRIVER:9290 028 089 500mA
30minutes warm-up

Planar Illuminance Curve



C Range: 0 - 360DEG
 C Interval: 30.0DEG
 Test Speed: HIGH
 Temperature: 25.3DEG
 Operators: Zoe
 Test Date: 2022-2-26

g Range: 0 - 180DEG
 g Interval: 1.0DEG
 Test System: EVERFINE GO-SPEX500_V1 SYSTEM V2.00.416
 Humidity: 65.0%
 Test Distance: 3.160m [K=1.0000]
 Remarks: LAMP: CMU1013-0000-000N0U0A30G Ra:90
 LENS: PM-1083 15R
 DRIVER: 9290 028 089 500mA
 30minutes warm-up

LUMINOUS DISTRIBUTION INTENSITY DATA

Test:U:220.31V I:0.0971A P:20.721W PF:0.9661 Freq:49.99Hz Lamp Flux:2048.03x1 lm		
NAME: 2118.532-ACOT-37	TYPE:	WEIGHT:
SPEC.:3000K	DIM.:	SERIAL No.:2202260109
MFR.: RISE	SUR.:0.003316625m2	Shielding Angle:

Table--1

UNIT: cd

C(°) g (°)	0	30	60	90	120	150	180	210	240	270	300	330						
0	9426	9426	9426	9426	9426	9426	9426	9426	9426	9426	9426	9426						
5	8774	9020	9072	9094	9012	8866	8573	8273	8279	8286	8429	8628						
10	5480	6202	6370	6467	6168	5622	4872	4329	4342	4398	4662	5096						
15	2438	2768	2826	2845	2651	2390	2183	1891	1925	1933	2084	2208						
20	1047	1192	1184	1199	1090	986	883	784	780	826	848	924						
25	413	461	456	466	422	385	351	300	312	317	336	360						
30	164	187	173	175	157	144	133	117	125	130	134	142						
35	72.8	73.9	71.8	68.6	64.2	57.6	54.6	49.9	53.4	56.2	59.9	63.3						
40	32.3	33.1	30.5	29.2	26.2	24.7	24.0	23.1	24.8	26.0	27.8	29.2						
45	14.7	14.9	13.1	12.0	10.8	10.1	9.23	9.14	9.30	10.1	11.9	13.1						
50	5.20	5.59	5.16	4.94	4.55	4.28	3.88	4.15	4.22	4.18	4.36	4.75						
55	2.80	3.08	2.67	2.60	2.23	2.02	1.73	2.04	2.14	2.07	2.21	2.53						
60	0.78	0.89	0.80	0.71	0.57	0.60	0.64	0.79	0.79	0.74	0.69	0.71						
65	0.54	0.63	0.49	0.27	0.08	0.04	0.05	0.05	0.10	0.39	0.49	0.49						
70	0.05	0.03	0.03	0.04	0.03	0.03	0.05	0.04	0.03	0.04	0.03	0.03						
75	0.05	0.03	0.03	0.03	0.03	0.03	0.10	0.05	0.03	0.04	0.03	0.03						
80	0.06	0.03	0.03	0.04	0.03	0.03	0.20	0.05	0.03	0.05	0.03	0.03						
85	0.06	0.03	0.03	0.04	0.02	0.03	0.06	0.03	0.02	0.05	0.02	0.03						
90	0.00	0.00	0.00	0.00	0.00	0.00	0.00	0.00	0.00	0.00	0.00	0.00						
95	0.00	0.00	0.00	0.00	0.00	0.00	0.00	0.00	0.00	0.00	0.00	0.00						
100	0.00	0.00	0.00	0.00	0.00	0.00	0.00	0.00	0.00	0.00	0.00	0.00						
105	0.00	0.00	0.00	0.00	0.00	0.00	0.00	0.00	0.00	0.00	0.00	0.00						
110	0.00	0.00	0.00	0.00	0.00	0.00	0.00	0.00	0.00	0.00	0.00	0.00						
115	0.00	0.00	0.00	0.00	0.00	0.00	0.00	0.00	0.00	0.00	0.00	0.00						
120	0.00	0.00	0.00	0.00	0.00	0.00	0.00	0.00	0.00	0.00	0.00	0.00						
125	0.00	0.00	0.00	0.00	0.00	0.00	0.00	0.00	0.00	0.00	0.00	0.00						
130	0.00	0.00	0.00	0.00	0.00	0.00	0.00	0.00	0.00	0.00	0.00	0.00						
135	0.00	0.00	0.00	0.00	0.00	0.00	0.00	0.00	0.00	0.00	0.00	0.00						
140	0.00	0.00	0.00	0.00	0.00	0.00	0.00	0.00	0.00	0.00	0.00	0.00						
145	0.00	0.00	0.00	0.00	0.00	0.00	0.00	0.00	0.00	0.00	0.00	0.00						
150	0.00	0.00	0.00	0.00	0.00	0.00	0.00	0.00	0.00	0.00	0.00	0.00						
155	0.00	0.00	0.00	0.00	0.00	0.00	0.00	0.00	0.00	0.00	0.00	0.00						
160	0.00	0.00	0.00	0.00	0.00	0.00	0.00	0.00	0.00	0.00	0.00	0.00						
165	0.00	0.00	0.00	0.00	0.00	0.00	0.00	0.00	0.00	0.00	0.00	0.00						
170	0.00	0.00	0.00	0.00	0.00	0.00	0.00	0.00	0.00	0.00	0.00	0.00						
175	0.00	0.00	0.00	0.00	0.00	0.00	0.00	0.00	0.00	0.00	0.00	0.00						
180	0.00	0.00	0.00	0.00	0.00	0.00	0.00	0.00	0.00	0.00	0.00	0.00						

C Range: 0 - 360DEG
C Interval: 30.0DEG
Test Speed: HIGH
Temperature:25.3DEG
Operators:Zoe
Test Date:2022-2-26

g Range: 0 - 180DEG
g Interval: 1.0DEG
Test System:EVERFINE GO-SPEX500_V1 SYSTEM V2.00.416
Humidity:65.0%
Test Distance:3.160m [K=1.0000]
Remarks: LAMP:CMU1013-0000-000N0U0A30G Ra:90
LENS:PM-1083 15R
DRIVER:9290 028 089 500mA
30minutes warm-up